

LAKE COUNTY FOLK CLUB

* JANUARY

2019

06

Bluegrass Jam

hosted by
SCOTT ENGSTROM

13

Open Stage

hosted by
SCOTT ENGSTROM

20

Concert Stage

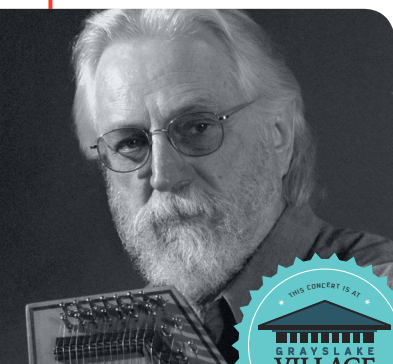
featured artist
BRYAN BOWERS

27

Song Circle

hosted by
DAVID CALLAN

UPCOMING CONCERT @ VILLAGE HALL / JANUARY 20



BRYAN BOWERS

For over four decades, **Bryan Bowers** has been to the autoharp what Earl Scruggs was to the five-string banjo. From his rather unglamorous beginning as a Seattle street singer in the early 70s, Bryan has become a truly major artist on the traditional music circuit and a must-see entertainer.

His **instrumental virtuosity** combined with his warmth, eloquence, expression and professionalism puts Bowers in the rarified company of luminaries like Chet Atkins, David Grisman, Itzhak Perlman, and Tony Rice.

In addition to redefining the autoharp, he's also well known as a wonderful singer and skillful songwriter. Bryan has a dynamic outgoing personality and an uncanny ability to enchant a crowd in practically any situation. **This concert at the Grayslake Village Hall is not to be missed!**

★ OPENING: JACK KENNEDY

Opening the evening's concert will be folk club member **Jack Kennedy**, a personality-rich songwriter/storyteller who shares a great deal with Mark Twain—the wily and witty intellect, the colloquial humor, the deft character sketches, not to mention the supremely impressive mustache. Jack's lyrics will keep you on your toes, and his melodies will have you tapping them.

EVENTS

Sundays at 7PM

OUR LOCATION! ←

Grayslake
Heritage Center

164 Hawley Street
Grayslake, IL
[Link to Map >](#)

CONCERT ADMISSION

General	\$18
Senior	\$15
Members	\$13

Doors open at 6:00PM for
all concert performances.

CONCERT RESERVATIONS

847.602.8882

Please text or call before noon
on the Sunday of the show.

Annual Meeting

ESTD.  1991
LAKE COUNTY
FOLK CLUB

FEBRUARY 24 @ 5:30 PM

Please join us at the Lake County Folk Club Annual Meeting
There will be pizza for all, a 2018 year-in-review and 2019 planning.
It's a great time to get involved in the club.

Come for the meeting, stay for the Song Circle!

FEBRUARY EVENTS

OPEN STAGE FEBRUARY 10

Sign-up at 6:30PM
Host: **Scott Engstrom**

CONCERT STAGE FEBRUARY 17

Artist: **Donna Herula & Tony Nardiello**
Opener: **Peter MacDonald**

ANNUAL MEETING FEBRUARY 24

All are welcome at 5:30

SONG CIRCLE

Join us from 7:00-9:00PM / Host: **Judi Z**

FUTURE EVENTS

CONCERT STAGE MARCH 17

Artist: **Lee Murdock**
"The Irish in America"

CONCERT STAGE MARCH 31

Artist: **Dan Zahn & Friends**
A Birthday Concert

CONCERT STAGE OCTOBER 20

Artist: **Noah Derksen**

Become a Member or Volunteer

2017 MEMBERSHIP

Individual \$20
Family \$30

Only members are chosen as opening acts for the featured performers of our Concert Series.

Please inquire at any of our events about becoming a member. We appreciate your support!

VOLUNTEER

All of the work involved in our concerts (*booking, promotions, venue equipment set-up and tear-down*) is performed by our loyal volunteers.

Please consider volunteering your time and energy. Just mention that you'd like to at any LCFC event.

UPCOMING CONCERT STAGE / FEBRUARY 17

DONNA HERULA & TONY NARDIELLO



Donna Herula and Tony Nardiello are a fantastic Chicago-area traditional acoustic blues, husband and wife duo that has a passion for performing Delta, country, folk and early Chicago Blues.

Donna, an accomplished slide guitarist with a powerful blues voice, has been inspired by blues artists from Son House to Rory Block. Donna is a member of the LCFC and was inducted into the Chicago Blues Hall of Fame in 2016.

Tony is a talented singer, guitarist, and harmonica player, and a disciple of country blues legends Mississippi John Hurt, Blind Blake and Lightin' Hopkins. Together, they bring a special harmony, heart and driving rhythm to the acoustic blues tradition. C'mon out and get your mojo workin' in February at the LCFC!

★ OPENING: PETER MACDONALD

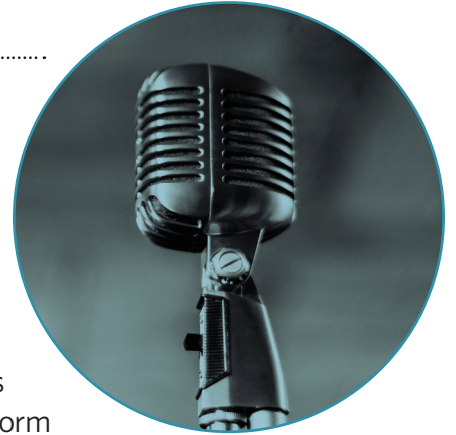
Stepping out from behind the mixing board for the evening's concert will be Peter MacDonald—a longtime folk-clubber and volunteer member of our fantastic sound engineering team. Peter is fluent in a wide variety of traditional musical styles, and charms audiences with his affable personality, tasteful guitar playing and soothing voice.

Open Stage / Second Sundays

The second Sunday of each month is our Open Stage night, hosted by Scott Engstrom. Come out and enjoy some great local musical talent! Non-performing listeners are always encouraged and will be pleasantly surprised with the diverse musical styles represented. There's a little something for everyone.

Anyone who would like to perform is encouraged to do so.

You'll never find a more supportive audience than at the LCFC. Sign-up begins at 6:30 PM and the music starts at 7:00. Each performer is allowed up to two songs spanning about 10 minutes. If time permits—and it usually does—artists can perform an additional song near evening's end. (suggested \$3 donation)



Song Circle / Fourth Sundays

On the fourth Sunday of each month we hold our Song Circle. Members and non-members are always welcome. Come out to play or just listen.

Make music, learn new songs, make new friends.

Marcia Krieger, along with other members of the LCFC, hosts our Song Circle. It's a casual opportunity to kick back, play some music and meet others. The participants form a circle—each one in turn can choose to play a song, ask another participant for a song, or pass. It's a chance to lead songs or to join in with others. We keep moving around the circle until it's time to call it a night. (suggested \$3 donation)



Behind the Song / Check Schedule

We are thrilled to (occasionally) present a special Behind the Song concert, hosted by Chuck VanderVennet. These unique events are an intimate exploration of the personal craft of songwriting from one artist's perspective.

Entertainment and inspiration.

Part concert, part interview, Chuck speaks candidly with the featured artist, and deftly exposes the backstory underlying song origins, stylistic choices, and the process of songwriting. Chuck also provides an opportunity for audience interaction, voicing any burning questions attendees might have. These are inspirational evenings for any music lover.



Our Venues



Grayslake Heritage Center

The Grayslake Heritage Center located at 164 Hawley Street in downtown Grayslake is our home for the majority of club events, including **Open Stage, Song Circle and most concerts**. This intimate space in a building rich with history and warmth of community is in perfect alignment with the folk music tradition we proselytize at our club events.

The [Grayslake Heritage Center & Museum](#) has become well known for assembling and displaying a wide variety of fascinating exhibits centered on Grayslake history. And we are part of that rich history! The Lake County Folk Club was founded in **October 1991 at the Last Chance Saloon** in downtown Grayslake.



MAP TO GHC >
164 HAWLEY STREET



Grayslake Village Hall

The LCFC is very excited to occasionally host some concerts at the beautiful Grayslake Village Hall theater space. We will make it clear in which performances will take place at this venue—just **look for the icon on the left** in concert listings.

The Village Hall is located at 10 South Seymour Avenue in downtown Grayslake, just west of the railroad tracks, and just a couple of blocks away from our typical venue, the Heritage Center.



MAP TO GVH >
10 S SEYMOUR AVENUE

*Light refreshments will be available during events, and the Grayslake community offers **many dining options** for those who want to eat before the music.*

Music for the people, by the people.

 Total Amount

Phone: (day) _____ (evening): _____

To subscribe to the monthly e-newsletter please email thelakecountyfolkclub@yahoo.com